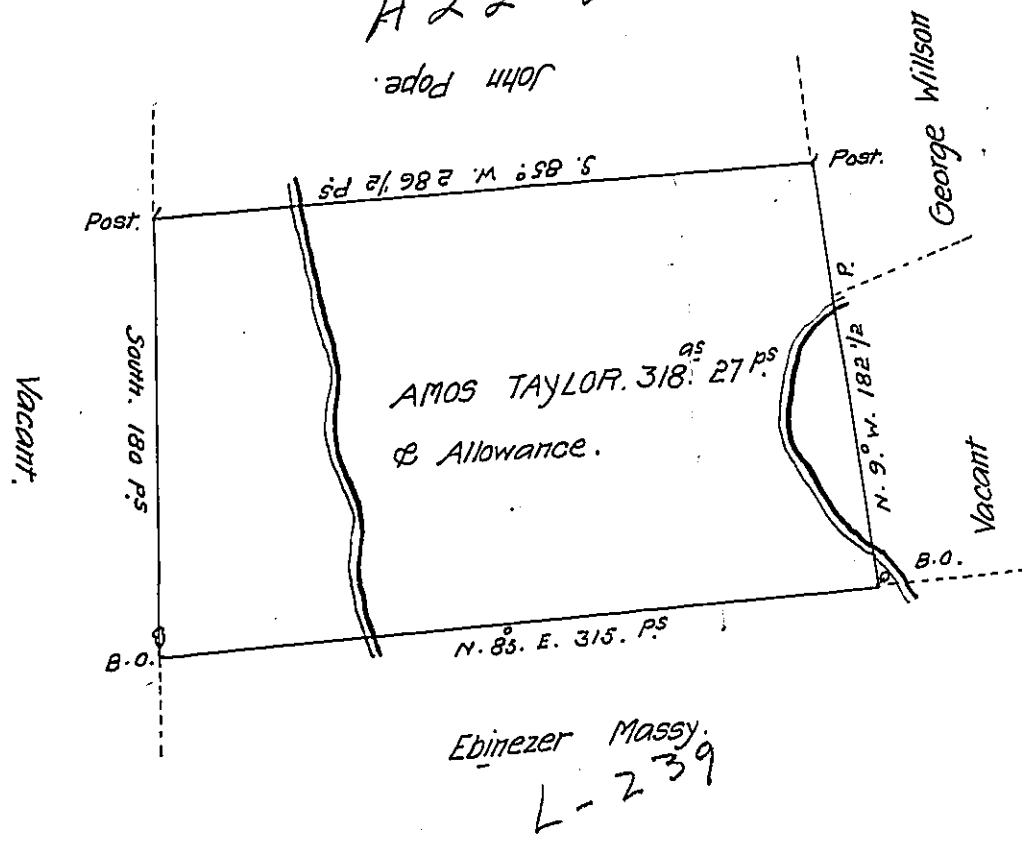


A 22-222

D 51-217



A Draught of a Tract of Land situate in Rye Township in the County of Cumberland containing three hundred and eighteen Acres and twenty seven perches and an Allowance of Six  $\frac{1}{2}$  Cent for Roads &c. Surveyd March 25<sup>th</sup> 1768 for Amos Taylor in pursuance of an Order of Survey Dated Feb<sup>y</sup> 4<sup>th</sup> 1767. N<sup>o</sup> 2679.

John Armstrong D.S.

To John Lutens Esq<sup>r</sup>  
 Surveyor General.

IN TESTIMONY that the above is a copy of the original remaining on file in the Department of Internal Affairs of Pennsylvania, made conformably to an Act of Assembly approved the 16th day of February, 1833, I have hereunto set my Hand and caused the Seal of said Department to be affixed at Harrisburg, this   tenth   day of   June   1908.

*Henry Howck*  
 Secretary of Internal Affairs.